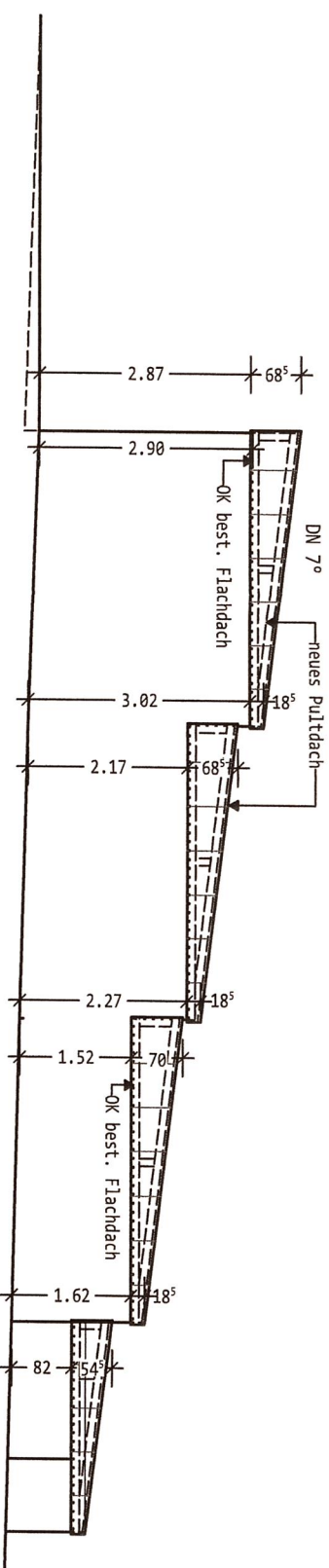


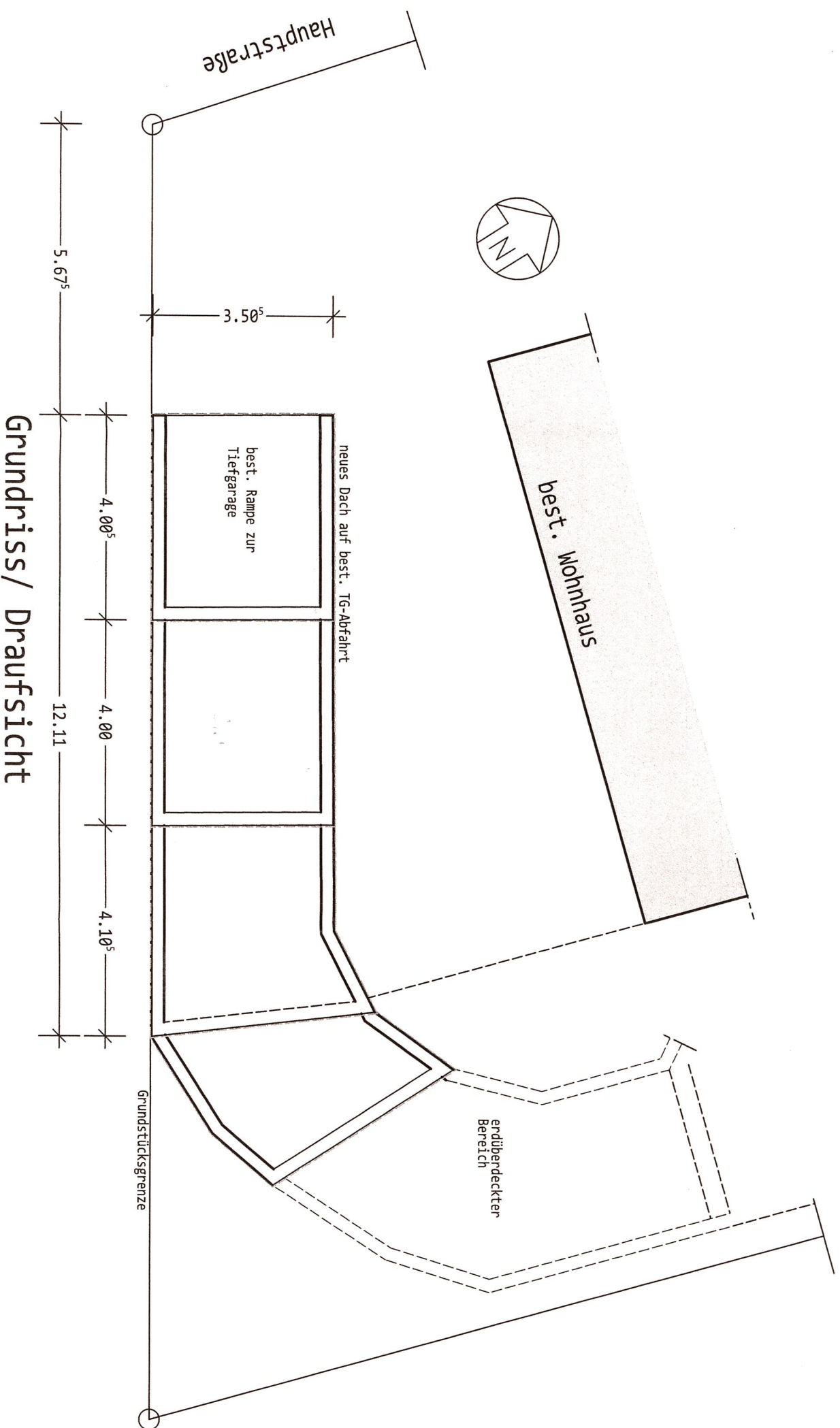
Nord-West-Seite



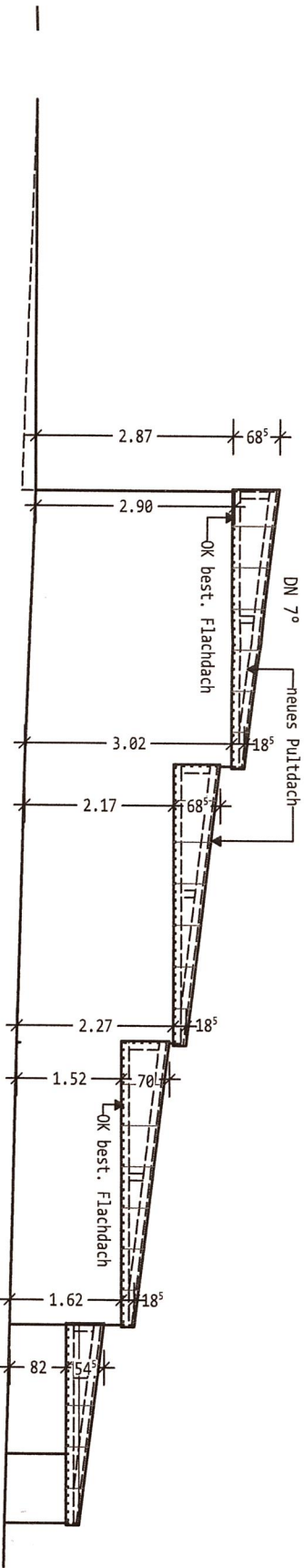
Süd-West-Seite

Berechnung mittlere Wandhöhe:
 1. Teil: $3,55+3,205/2 = 3,38 \text{ m}$
 2. Teil: $2,855+2,455/2 = 2,655 \text{ m}$
 3. Teil: $2,22+1,805/2 = 2,015 \text{ m}$

mittlere Wandhöhe: $3,38*4,005+2,655*4,0+2,015*4,105 = 32,43/12,11 = 2,68 \text{ m}$

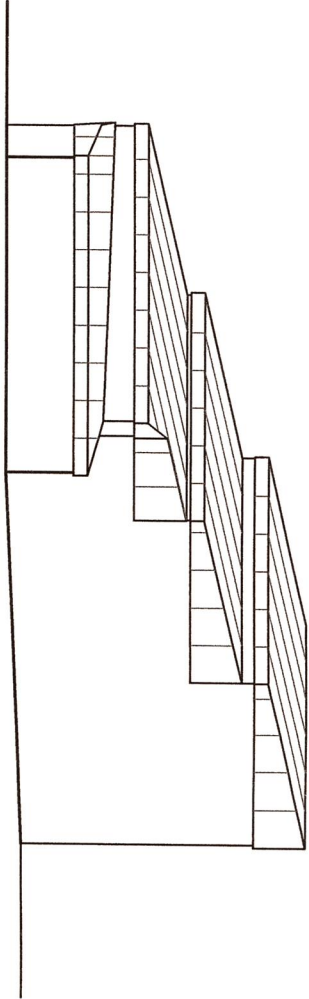


Grundriss/ Draufsicht

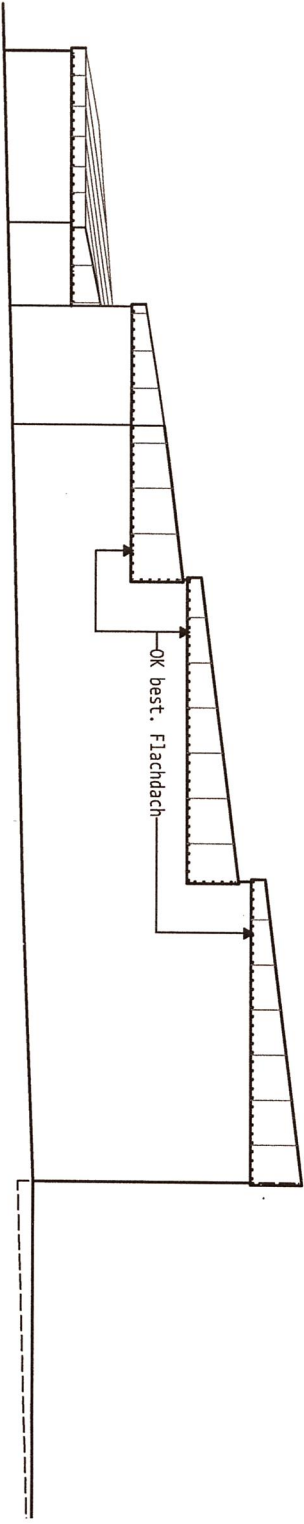


Süd-West-Seite

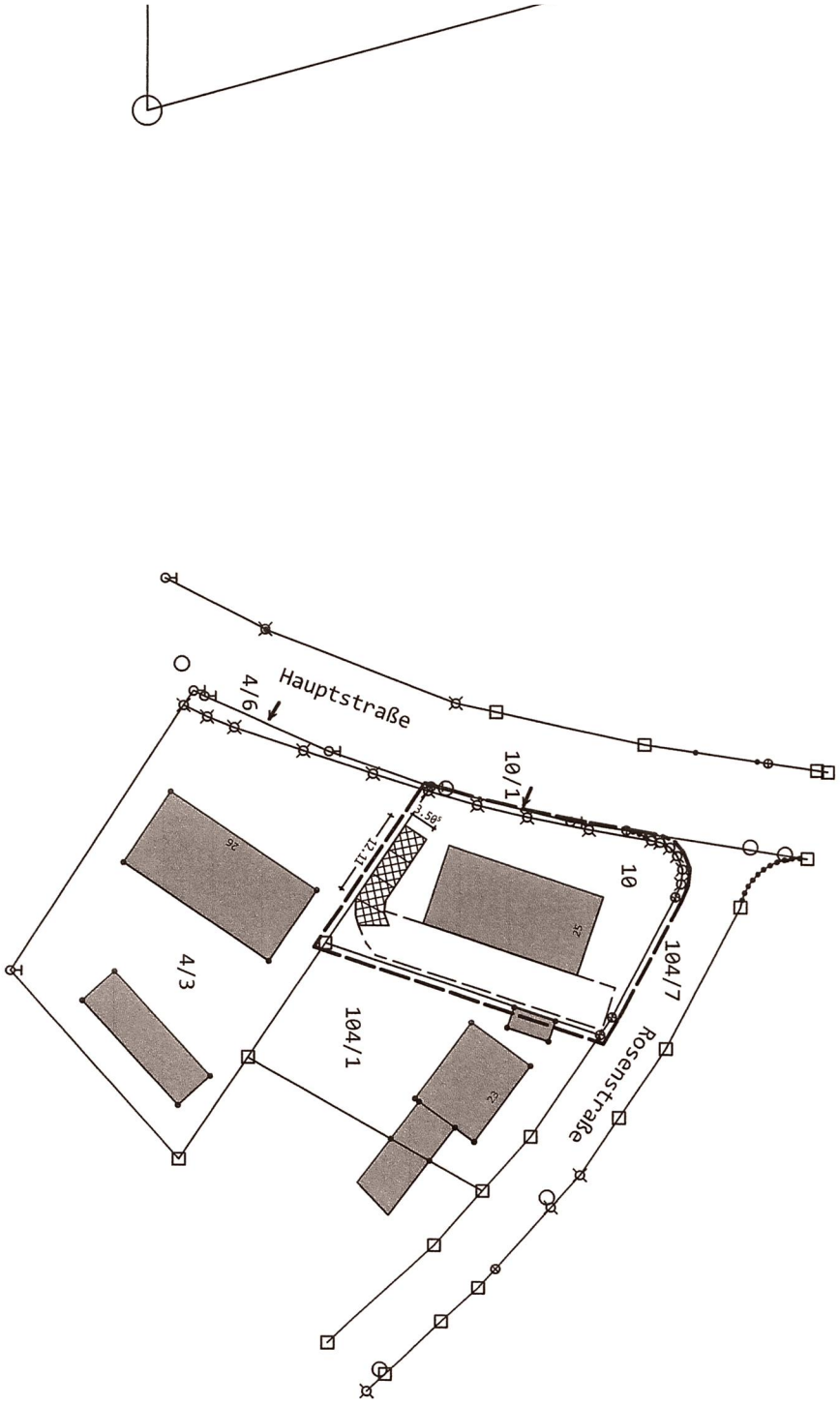
Berechnung mittlere Wandhöhe:
 1. Teil: $3,55+3,205/2 = 3,38 \text{ m}$
 2. Teil: $2,85+2,455/2 = 2,655 \text{ m}$
 3. Teil: $2,22+1,805/2 = 2,015 \text{ m}$
 mittlere Wandhöhe: $3,38*4,005+2,655*4,0+2,015*4,105 = 32,43/12,11 = 2,68 \text{ m}$



Ost-Seite



Nord-Ost-Seite



Lageplan M. 1:1000